

Degutopia Independent 30-Day Feed Trial: Pets at Home Degu Nuggets Diet

C.V. Long

Abstract

Degu colony groups were trialed on a new degu-specific diet, 'Pets at Home Degu Nuggets' (manufactured by Burgess Group PLC), to assess its suitability for maintaining healthy degus. The trial feed was found to meet the needs of the degu appropriately and is recommended as a degu maintenance diet by Degutopia, in addition to hay and fresh vegetable matter. There was no significant difference in weight change between trial and control degus, however the trial diet did not perform well in preference tests.

Introduction

The degu (*Octodon degus*) is a diurnal, semifossorial herbivorous rodent, native to the semi-arid scrublands of central Chile. Degus have become popular as domestic pets over the last few decades, and interest in them has expanded throughout the UK and Europe. Although closely related to other caviomorphs such as the guinea pig and chinchilla, and having a similar digestive system, the degu has a unique dietary requirement making many feed products formulated for these other species somewhat unsuitable and in some cases leading to severe health problems for the degu. The most notable feature of a degu's physiology is that they are extremely intolerant of dietary glucose (e.g. Brown and Donnelly, 2001; Nishi and Steiner, 2003; Opazo *et al.*, 2003). Much research in this area has shown that degus very easily develop diabetes mellitus when regularly fed on a sugar-containing diet (Nishi and Steiner, 2003; Brown and Donnelly, 2001), therefore it is crucial that any degu-specific feed exclude free sugars and have a low carbohydrate content. It is advised the total sugars content be less than 5 % in degu specific formulations (Long, 2009), given that it takes degus over one hour for blood glucose levels to return to normal after ingesting just 0.7 g glucose (Opazo *et al.*, 2003). Research suggests that dietary protein should also be low in degu feeds, since they have only an 85% dietary capacity for protein (Ebensperger, 2001), of which large amounts can lead to a significant increase in water consumption / drinking behaviour (Cortes *et al.*, 1988) due to the excess strain placed upon the kidneys. Long-term, this can lead to permanent kidney damage. Conversely, the fibre content should be maximised as this makes up the most significant proportion of the wild degu diet (Bozinovic *et al.* 2004; Ebensperger and Wallem, 2002), with degus being specially adapted to break down cellulose by alloenzymatic action (Langer, 2002). Bauck (2004) has suggested that caviomorphs need a minimum of 18% dietary fibre in order to maintain healthy digestion, but research by Langer (2002) suggests that it may need to be as high as 21% in the degu. However, any feed produced should take into account that it is advisable to give natural hay *ad lib.* to degus in order to encourage them to forage throughout the day, aid peristalsis and maintain intestinal bacterial health (Bozinovic *et al.*, 2004). It is the popular belief that degus, like their close relative the guinea pig, are not able to produce their own vitamin C, although the lack of research in this area promotes this as hypothesis only. One study by Jenness *et al.* (1980) indicated that degus may in fact be able to produce their own vitamin C, as significant levels of L-gulonolactone oxidase (a precursor to ascorbic acid) were detected in degus maintained on a low vitamin C diet. Until further research can be done, it is important that any degu feed contains added vitamin C in order to avoid potential health problems (Sapra *et al.*, 1987). This is particularly important as many mammals produce their own vitamin C from dietary glucose and galactose (Burri and Jacob, 1997), which are lacking in the degu's natural diet.

In 2008, Pets at Home Ltd. released a new degu diet into the market, part of their own brand range, produced for them by Burgess Group PLC (Stirk, 2009). This feed is a monoform, extruded diet, consisting entirely of rounded cylindrical pieces approx. 0.5 * 1 cm.

The extrusions are brown in colour, hard and have a mild scent. The ingredients and nutritional breakdown of the product can be found in Table 1.

Ingredients	
Wheat, Oat Bran, Grass, Soya, Peas, Unmolassed beet pulp, Yeast, Vegetable oil, Mint, Mono Calcium Phosphate, Fructo - oligosaccharides (profeed min 0.25%), Salt.	
Nutritional Breakdown	
Total Sugars*	4.2 %
Fibre	15 %
Protein	16 %
Fat	3 %
Ash	6.5 %
Vitamin C	800 mg kg ⁻¹
Vitamin A	20000 IU kg ⁻¹
Vitamin D ₃	1200 IU kg ⁻¹
Vitamin E	100 mg kg ⁻¹
Copper	15 mg kg ⁻¹

Table 1- Ingredients list and nutritional breakdown for Pets at Home's Degu Nuggets diet.

*Tested independently for Degutopia by Eclipse Scientific Group's laboratories, total sugars as sucrose.

This feed was considered to be appropriate for degus and was rated as one of Degutopia's 'recommended' degu diets based on the nutrition and ingredients, with all components given a suitability score of 'moderate' and above (see <http://www.degutopia.co.uk/degudiet.htm> for further details). As part of the ongoing work by Degutopia to test the suitability of newly formulated degu feeds, we conducted the following independent trial.

Methodology

Animals and Housing

For the trial, a sample of captive degus were monitored, which were kept in a private collection in Leicestershire, UK. All degus included in the study were fully adult (age range 3-7 years) and had been bred for at least one traceable generation. The sample consisted of three groups; one control group (two females) and two trial groups (three females and one males and one neutered female, respectively). Each respective group was housed in their own colony mesh cage of average dimensions 100 x 60 x 100 cm (length, width, height). All degus had continual access to running wheels, drinking water and meadow hay. In addition, all degus were regularly allowed access to a large enclosure for exercise/play, as usual, throughout the course of the trial.

Diet

Prior to the start of the trial, all degus were maintained on a mixture of 5 g Supreme Petfoods' Gerty Guinea Pig feed mix and 3 g Supreme Petfoods' Science Selective Degu extrusion each per day (see appendix for ingredients lists/nutritional breakdowns). This was slightly less than the recommended 10 g per day portion as the result of previous trial findings (Degutopia, 2009). During the trial, all control degus continued with this feed regime. One week prior to trial onset, all trial degus were gradually introduced to the trial feed (Pets at Home's Degu Nuggets) by increasing the daily quantity of trial diet and simultaneously decreasing the original diet until only trial diet was being fed on the day before trial start. This was done to avoid digestive upset by allowing the degus' intestinal microflora time to adapt to the new feed. After this period the trial was started for the period of 30 days, with all trial degus maintained on 10 g of the trial diet (see Figure 1).



Figure 1- Sample daily 10g portion of the Science Selective Degu trial diet. Scales accurate to 1g, dish zeroed.

Data Collection

Weight data were collected from each control and trial degu on weighing scales accurate to 1 g. In order to facilitate data collection, a small quantity (~1 g) of rolled oats was placed onto the scales to keep the degu in position for the few seconds required to read off the weight. Scales were zeroed prior to the weighing event and calibrated with a 200 g fixed mass weight prior to each weight reading. Data collection was divided into two periods; pre-trial (days -6 – 0) and trial (days 1 – 30). During the pre-trial period, all degus were weighed at the start of the week allowed for introducing the trial diet to trial degus, and again at the end of this pre-trial period (the day prior to the start of the trial). During the trial period, all degus were weighed daily, at the same time of day to avoid any error arising from fluctuations that may occur in body weight over the course of the day. In addition, the quantity of water drunk in each colony cage was noted throughout the trial.

Data Analysis

Weight data were analysed by one-way ANCOVA using the GLM module of Statistica (Statsoft, Inc.). 'Degu' / 'trial status' (control or trial) was chosen as the independent variable, with 'weight' or 'change in weight' as dependent variables. 'Trial day' was selected as covariate since weight change was likely to be correlated with time as the trial progressed.

Results

Weight Changes

The weights of the trial degus were significantly lower ($F_{[1, 207]} = 16.42$; $p < 0.0005$) than the weights of the control degus over the trial period. Figure 2 shows the weights for all degus over the course of the trial, indicating the mean weights for both control and trial degus. There was no significance ($F_{[1, 207]} = 0.06$) between the change in weight of the control and trial degus over the trial period. Figure 3 demonstrates the daily change in weight for all degus in both samples. Complete weight tables can be found in the appendix.

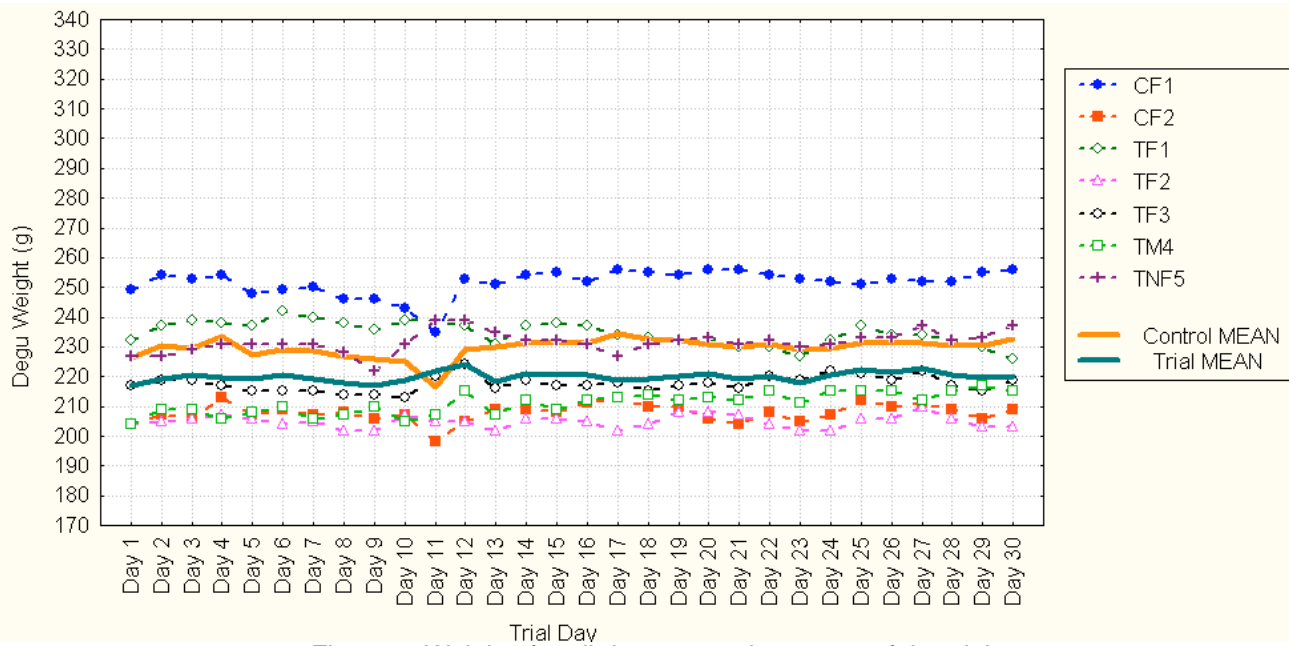


Figure 2- Weights for all degus over the course of the trial.

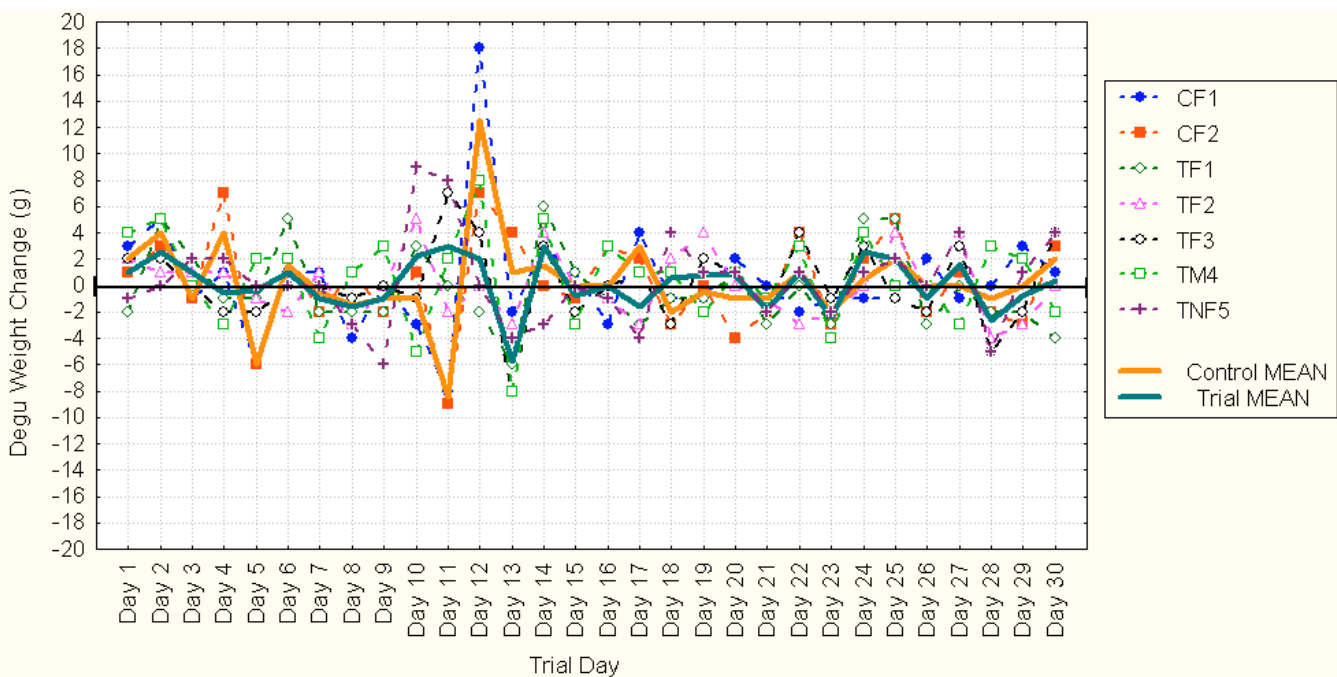


Figure 3- Daily weight changes for all degus over the course of the trial.

Preference tests

After the trial, all degus (trial and control) performed a preference test. Each degu was simultaneously presented with a small (approx. 7 mm) extrusion from either the trial feed, Beaphar's XtraVital Degu, or Supreme Petfoods' Gerty Guinea Pig or Science Selective Degu. In each case the first piece of diet to be taken was recorded, and the selection was presented to each degu in a randomised way. In this test, all degus selected the trial diet just 12 % of the time.

Water Consumption

Table 2 shows the water consumption for each group over the trial period.

Group	Group water consumed (ml)	Number of degus per group	Average individual water consumption (ml)
<i>Control</i>	1920	5*	384
Trial group 1	1020	3	340
Trial group 2	560	2	280

Table 2- Average water consumption per degu over the course of the trial for all groups. * Note that although this group contained 5 degus, only 2 were used as a control as the remaining 3 degus were not fully adult.

Discussion

While the control degus weighed significantly less than the trial degus over the trial period, the fact that there was no significant difference in the weight changes of both groups indicates that the trial diet was formulated as suitably for the degus' metabolic needs as the control diet. As all trial degus readily ate most of their 10 g serving in one sitting and did not demonstrate increased tendency to hoard leftover feed, this was deemed to be an appropriate measure per degu. There were no marked differences in individual water consumption between trial and control degus, indicating the trial diet did not have a marked affect on trial degus' water needs.

One factor that did stand out was the overall poor performance of the trial diet in the feed preference tests. At just 12 % preference as compared to 42 % preference for the XtraVital Degu, possible factors influencing choice may include the uniform appearance of the feed (although this does help to prevent selective eating of favoured pieces) and lack of aroma (as compared to the XtraVital which has a strong, pleasant odour).

In conclusion, the 30-day trial of Degu Nuggets manufactured for Pets at Home showed it to be a suitable candidate for feeding degus as their regular diet, in addition to hay and fresh vegetable matter. Degus did not show significant weight fluctuations as compared to degus maintained on the control diet, however the poor performance of the trial diet in preference tests indicated the appeal of the formulation could be improved.

References

- Bauck, L. (2004) *Technical bulletin: Timothy and alfalfa*. Pers. comm.
- Bozinovic, F., Bacigalupe, L., Vasquez, R., Visser, H., Veloso, C. and Kenagy, G. (2004) 'Cost of living in free-ranging degus (*Octodon degus*): Seasonal dynamics of energy expenditure.' *Comparative Biochemistry and Physiology A*, **137**: 597-604.
- Brown, C and Donnelly, T. (2001) 'Cataracts and reduced fertility in degus (*Octodon degus*): Contracts secondary to diabetes mellitus.' *Lab Animal (NY)*, **30** (6): 25-6.
- Burri, B. and Jacob, R. (1997) 'Human metabolism and the requirement for vitamin C.' *Vitamin C in Health and Disease*. New York: Marcell Dekker.
- Cortes, A., Zuleta, C. and Rosenmann, M. (1988) 'Comparative water economy of sympatric rodents in a Chilean semi-arid habitat.' *Comparative Biochemistry and Physiology*, **91** (4): 711-4.
- Degutopia (2009) *Independent Feed Trial Report: Science Selective Degu*. Accessed online <<http://www.degutopia.co.uk/SSDFeedTrialReport.pdf>> (July 23, 2009).
- Ebensperger, L. (2001) 'No infanticide in the hystricognath rodent, *Octodon degus*: Does ecology play a role?.' *Acta. Ethol.*, **3**: 89-93.
- Ebensperger, L. and Wallem, P. (2002) 'Grouping increases the ability of the social rodent, *Octodon degus*, to detect predators when using exposed microhabitats.' *OIKOS*, **98**: 491-497.
- Jenness, R., Birney, E.C. and Ayaz, K.L. (1980) 'Variation of L-gulonolactone oxidase activity in placental mammals.' *Comp Biochem Physiol.*, **67B**: 195-204.
- Langer, P. (2002) 'The digestive tract and life history of small mammals.' *Mammal Review*, **32** (2): 107-131.
- Long, C.V. (2009) *Degu Information- Diet* [www document]. <<http://www.degutopia.co.uk/degudiet.htm>> (accessed 23 July, 2009).
- Nishi, M. and Steiner, D. (2003) 'Cloning of complementary DNA's encoding islet amyloid polypeptide, insulin, and glucagon precursors from a New World rodent, the degu, *Octodon degus*.' *Molecular Endocrinology*, **4** (8): 1192-8.
- Opazo, J., Soto-Gamboa, M. and Bozinovic, F. (2003) 'Blood glucose concentration in caviomorph rodents.' *Comparative Biochemistry and Physiology A*, **137**: 57-64.
- Sapra, M., Sharma, P. and Kothari, L. (1987) 'Effect of vitamin C deficiency on testicular structure in the guinea pig.' *Journal of Postgraduate Medicine*, **33**: 69-73.
- Stirk, K. (2009) *Burgess Technical Director*. Pers. comm. (July 03, 2009).

Appendix

i. Ingredients and nutritional breakdown for Supreme Petfoods Ltd.'s Gerty Guinea Pig feed.

Ingredients	
Alfalfa, flaked peas, flaked maize, wheat and flaked wheat, oats, soya, locust beans, anise and fenugreek liquid, soya oil, orange, banana, vitamins and minerals, sodium chloride, EC colourants, sodium sulphide stabiliser.	
Nutritional Breakdown	
Total Sugars*	4.1 %
Fibre	10 %
Protein	15 %
Fat	3 %
Ash	5 %
Vitamin C	250 mg kg ⁻¹
Vitamin A	23000 IU kg ⁻¹
Vitamin D ₃	1000 IU kg ⁻¹
Vitamin E	50 mg kg ⁻¹
Copper	10 mg kg ⁻¹

*Tested independently for Degutopia by Eclipse Scientific Group's laboratories, total sugars as sucrose.

ii. Ingredients and nutritional breakdown for Supreme Petfoods Ltd.'s Science Selective Degu feed.

Ingredients	
Alfalfa, barley, wheat flour, wheatfeed, peas, soybean meal, broccoli, oats, soy oil, minerals, spinach, basil, salt.	
Nutritional Breakdown	
Total Sugars*	3.9 %
Fibre	10 %
Protein	16 %
Fat	4 %
Ash	8 %
Vitamin C	500 mg kg ⁻¹
Vitamin A	15000 IU kg ⁻¹
Vitamin D ₃	1400 IU kg ⁻¹
Vitamin E	50 mg kg ⁻¹
Copper	10 mg kg ⁻¹

*Tested independently for Degutopia by Eclipse Scientific Group's laboratories, total sugars as sucrose.

iii. Complete weight tables for all degus in the trial.

DeGutopia 30-day Feed Trial June 2009; Beaphar XtraVital Degu (New) and Pets at Home Degu Nuggets Diets.

Day	Poppy (F) Control Degu 1	Parsley (F) Control Degu 2	Nibble (F) Trial Degu 1	Naughts (F) Trial Degu 2	CNbi Maru (F) Trial Degu 3	Phillip (M) Degu 4	Trial	Freya (HF) Trial Degu 5	Dreggen (M) Trial Degu 6	Diego (M) Trial Degu 7
Pre-Intro weight 11-06-09	280	205	237	198	218	198		226	199	235
Post-Intro weight 16-06-09	246	203	234	202	215	200		228	192	225
Trial day 1 17-06-09	249	204	232	204	217	204		227	187	238
Trial day 2 18-06-09	254	207	237	205	219	209		227	188	237
Trial day 3 19-06-09	253	206	239	206	219	209		229	187	235
Trial day 4 20-06-09	254	213	238	207	217	206		231	191	232
Trial day 5 21-06-09	248	207	237	206	215	208		231	189	227
Trial day 6 22-06-09	249	209	242	204	215	210		231	190	230
Trial day 7 23-06-09	260	207	240	205	215	206		231	190	227
Trial day 8 24-06-09	246	208	238	202	214	207		228	193	230
Trial day 9 25-06-09	246	206	236	202	214	210		222	192	227
Trial day 10 26-06-09	243	207	239	207	213	205		231	196	232
Trial day 11 27-06-09	235	198	239	205	220	207		239	196	240
Trial day 12 28-06-09	253	205	237	205	224	215		239	196	240
Trial day 13 29-06-09	251	209	231	202	216	207		235	191	238
Trial day 14 30-06-09	254	209	237	206	219	212		232	193	233
Trial day 15 01-07-09	255	208	238	206	217	209		232	190	235
Trial day 16 02-07-09	252	211	237	205	217	212		231	188	231
Trial day 17 03-07-09	296	213	234	202	218	213		227	189	230
Trial day 18 04-07-09	255	210	233	204	215	214		231	191	228
Trial day 19 05-07-09	254	210	232	208	217	212		232	192	231
Trial day 20 06-07-09	296	206	233	208	218	213		233	193	235
Trial day 21 07-07-09	296	204	230	207	216	212		231	192	233
Trial day 22 08-07-09	254	208	230	204	220	215		232	192	232
Trial day 23 09-07-09	253	205	227	202	219	211		230	195	235
Trial day 24 10-07-09	252	207	232	202	222	215		231	193	232
Trial day 25 11-07-09	251	212	237	206	221	215		233	205	236
Trial day 26 12-07-09	253	210	234	206	219	215		233	200	233
Trial day 27 13-07-09	252	211	234	210	222	212		237	198	234
Trial day 28 14-07-09	252	209	232	206	217	215		232	198	230
Trial day 29 15-07-09	255	206	230	203	215	217		233	192	231
Trial day 30 16-07-09	296	209	226	203	219	215		237	195	229